

CATCH BASINS

POLYETHYLENE CATCH BASINS* Custom made to order only

RISER DIAMETER	RISER HEIGHT	STUB** DIAMETER
12" - 48" (300mm-1200mm)	2' - 8' (0.6m-2.4m)	4" - 48" (100mm-1200mm)

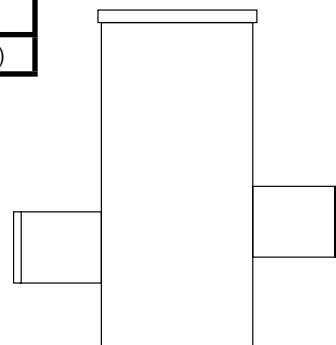
*RISERS MUST BE PROPERLY BACKFILLED VERTICALLY PER HANCOR DRAINAGE HANDBOOK - INSTALLATIONS/ VERTICAL. USE FITTING LIMITATION SHEET TO INFORM AND ENSURE PROPER INSTALLATION COMPLIANCE. 54" AND 60" (1350 AND 1500MM) NOT AVAILABLE FOR VERTICAL APPLICATIONS.

STUBS MUST FIT ON CIRCUMFERENCE AND HEIGHT OF RISER AND MUST NOT BE OVERLAPPING. STUBS ARE STANDARD LENGTH FOR COUPLING AND MUST BE A SMALLER DIAMETER THAN THE RISER. NO MORE THAN THREE STUBS PER STRUCTURE UNDER MOST CIRCUMSTANCES.

LIDS SHOULD BE INSTALLED PER LIGHT DUTY CATCH BASIN DETAIL AND ARE AVAILABLE THROUGH OTHER MANUFACTURERS. CATCH BASIN LIDS ARE NOT FABRICATED BY HANCOR. HDPE BOTTOM DOES NOT COME STANDARD WITH RISERS. MUST BE REQUESTED. **STUBS AVAILABLE IN SURE-LOK® (HUB), HI-Q® OR SMOOTH HDPE.

FOR MORE INFORMATION CONTACT HANCOR'S APPLICATION ENGINEERING DEPARTMENT AT 800-2HANCOR (242-6267, EXT. 809).

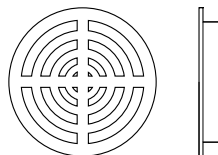
HANCOR END CAPS ARE FOR HORIZONTAL APPLICATIONS ONLY. HANCOR END CAPS ARE NOT PERMITTED TO BE USED IN ANY VERTICAL APPLICATIONS. MISUSE OR FAILURE TO PROPERLY SECURE END CAPS MAY RESULT IN DAMAGE TO PERSONS OR PROPERTY OR MAY RESULT IN INJURY OR DEATH.



CATCH BASIN

POLYETHYLENE DRAIN GRATES

SIZE	PRODUCT CODE
12" (300mm)	MR GDG 12 0000
15" (375mm)	MR GDG 15 0000



DRAIN GRATE