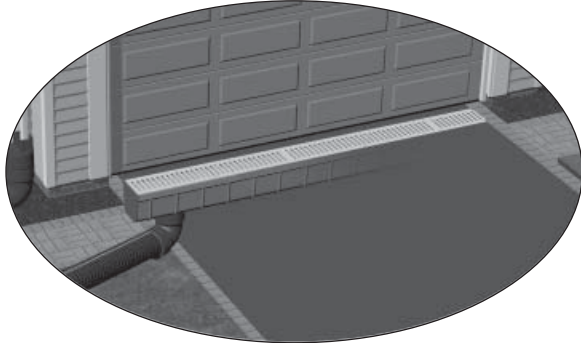
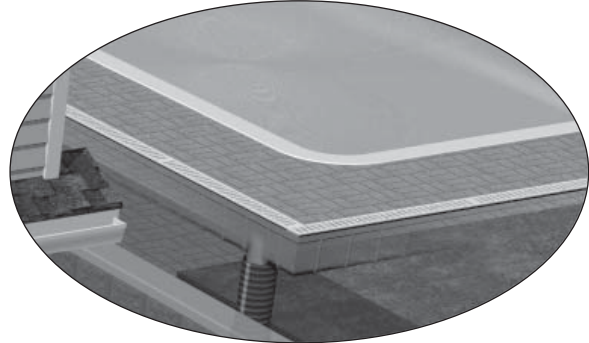


Applications: Channel basins and grates are used where hard surfaces create a greater volume of runoff than can be handled by round or square basins. Ideal for driveways, sidewalks, garages, swimming pools, patios, sports fields and greenhouses.

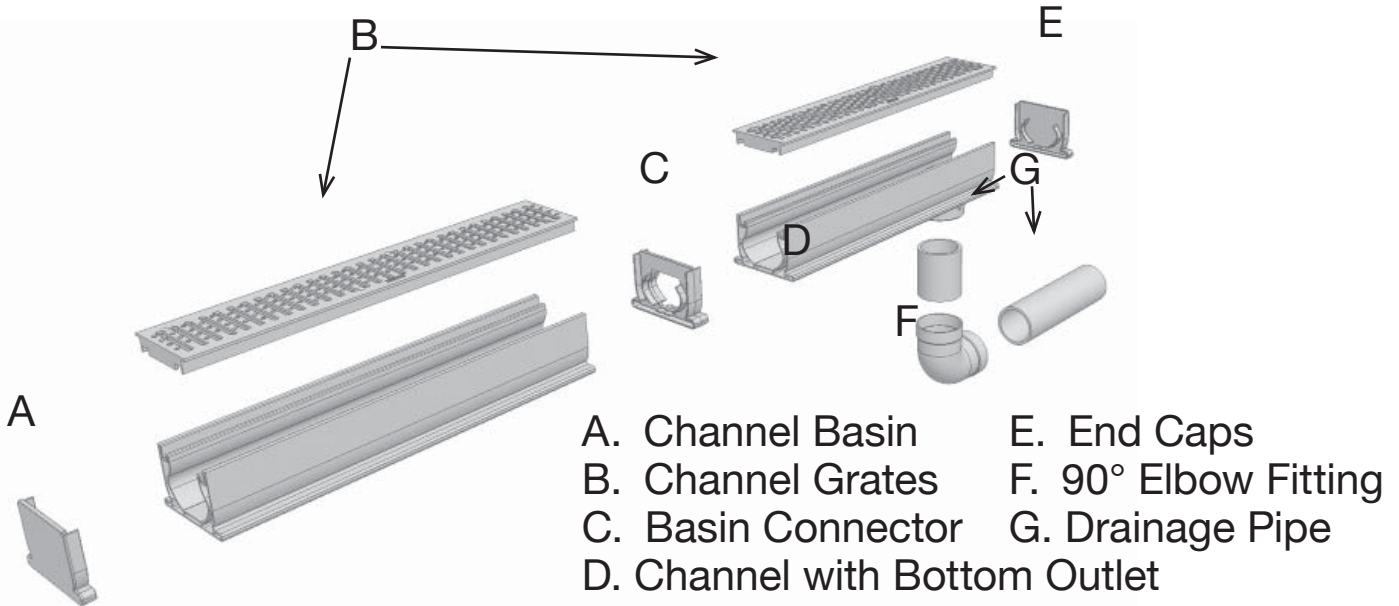


Use 5" channel and grate to collect runoff from driveways and sidewalks



Edge pool decks and patios with 3" or 5" channel drains to keep them dry and less slippery

PVC Series



3" Channel Basin



Uses: 3", 4" corrugated singlewall pipe; 3", 4" TripleWall pipe; 3", 4" PVC pipe; singlewall HDPE fittings; DrainTech 3" channel grates and DrainTech 3" fittings. We recommend one channel bottom outlet for every 10 feet of channel basin installed. Anchor stakes available.

Product #	Description	UPC Code	Dimensions (inches)			Package Quantity
			L	D	H	
0304CH	4' Channel Basin	096942709088	48.0	3.8	3.1	16
0306CH	6' Channel Basin	096942709095	72.0	3.8	3.1	8
0310CH	10' Channel Basin	096942709101	120.0	3.8	3.1	4

3" Channel Grate ADA Compliant



Uses: 3" DrainTech Channel Basin. Combine two-foot lengths to cover longer lengths of channel basin. Gray is standard color.

Product #	Description	UPC Code	Dimensions (inches)			Package Quantity
			L	D	H	
0301CHDI	One-foot ductile iron	096942717595	12.0	3.8	1.0	12
0301CHPBR	One-foot polished brass	096942717311	12.0	3.8	1.0	12
0301CHSBR	One-foot satin brass	096942717328	12.0	3.8	1.0	12
0324CHB	Two-foot black	096942709750	24.0	3.8	1.0	12
0324CHG	Two-foot green	096942709743	24.0	3.8	1.0	12
0324CHY	Two-foot gray	096942709736	24.0	3.8	1.0	12
0324CHS	Two-foot sand	096942711807	24.0	3.8	1.0	12

3" Channel Bottom Outlet



Uses: Two-foot channel basin section has bottom drain outlet molded into it.

Product #	Description	UPC Code	Dimensions (inches)			Package Quantity
			L	D	H	
0315CH	Channel Bottom Outlet	096942709149	24.0	3.8	7.0	6

3" Channel Bottom Kit

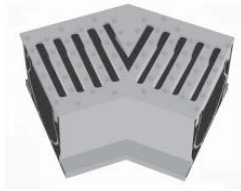


A complete package: Kit includes a 4'-foot channel, one channel coupler and one solid end cap. Both models come with top grates. Attach drainage pipe or fittings to the outlet.

Product #	Description	UPC Code	Dimensions (inches)			Package Quantity
			L	D	H	
0315CHYK	Channel Bottom Outlet Kit	096942711999	48.0	3.8	7.0	6

3" Channel Basin 45° Elbow Grate

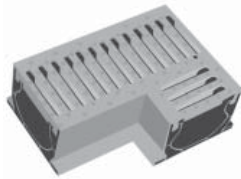
Use: Use to join two sections of channel basin at a 45° angle.



Product #	Description	UPC Code	Dimensions (inches)			Package Quantity
			L	W	H	
0345CHY	Gray basin with 45 elbow	096942710879	7.5	3.5	3.4	1
0345CHS	Sand basin with 45 elbow	096942711814	7.5	3.5	3.4	1
0345CHB	Black basin with 45 elbow	096942740425	7.5	3.5	3.4	1
0345CHG	Green basin with 45 elbow	096942740418	7.5	3.5	3.4	1

3" Channel Basin 90° Elbow Grate

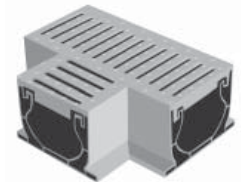
Use: Use to join two sections of channel basin at a 90° angle.



Product #	Description	UPC Code	Dimensions (inches)			Package Quantity
			L	W	H	
0390CHY	Gray basin with 90 elbow	096942710220	9.0	9.0	3.3	1
0390CHS	Sand basin with 90 elbow	096942710886	9.0	9.0	3.3	1
0390CHB	Black basin with 90 elbow	096942740494	9.0	9.0	3.3	1
0390CHG	Green basin with 90 elbow	096942740500	9.0	9.0	3.3	1

3" Channel Basin Tee Grate

Use: Use to run a secondary channel basin off a main channel at a 90° angle.



Product #	Description	UPC Code	Dimensions (inches)			Package Quantity
			L	W	H	
0360CHY	Gray basin tee	096942710213	9.0	6.3	3.3	1
0360CHS	Sand basin tee	096942740487	9.0	6.3	3.3	1
0360CHB	Black basin tee	096942740432	9.0	6.3	3.3	1
0360CHG	Green basin tee	096942740449	9.0	6.3	3.3	1

3" Channel Bottom Outlet

Uses: Attaches drainage line to 3" channel basin.



Product #	Description	UPC Code	Dimensions (inches)			Package Quantity
			L	D	H	
0314CH	Channel End Outlet	096942709132	3.3	3.8	1.3	20

3" Channel Solid End Cap

Uses: Caps off 3" channel basin.



Product #	Description	UPC Code	Dimensions (inches)			Package Quantity
			L	D	H	
0313CH	Solid End Cap	096942709125	3.3	3.8	1.3	20

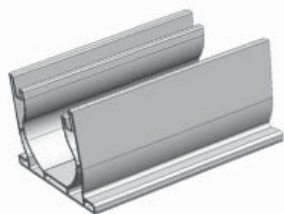
3" Channel Coupler

Uses: Joins sections of 3" channel basin.



Product #	Description	UPC Code	Dimensions (inches)			Package Quantity
			L	D	H	
0312CH	Channel Coupler	096942709118	3.3	3.8	1.3	20

5" Channel Basin



Uses: 3", 4" corrugated singlewall pipe; 3", 4" TripleWall pipe; 3", 4" PVC pipe; singlewall HDPE fittings; DrainTech 5" channel grates 5" fittings. We recommend one channel bottom outlet for every 10 feet of channel basin installed. Anchor stakes available.

Product #	Description	UPC Code	Dimensions (inches)			Package Quantity
			L	D	H	
0504CH	4' Channel Basin	096942708241	48.0	5.7	3.7	6
0506CH	6' Channel Basin	096942708258	72.0	5.7	3.7	6
0510CH	10' Channel Basin	096942708265	120.0	5.7	3.7	6

5" Channel Grate ADA Compliant

Uses: 5" DrainTech Channel Basin. Combine two-foot lengths to cover longer lengths of channel basin.



Product #	Description	UPC Code	Dimensions (inches)			Package Quantity
			L	D	H	
0501CHDI	One-foot ductile iron	096942717601	12.0	4.8	1.0	10
0501CHPBR	One-foot polished brass	096942717335	12.0	4.8	1.0	10
0501CHSBR	One-foot satin brass	096942717342	12.0	4.8	1.0	10
0524CHB	Two-foot black	096942709729	24.0	4.8	1.0	12
0524CHG	Two-foot green	096942709712	24.0	4.8	1.0	12
0524CHY	Two-foot gray	096942709705	24.0	4.8	1.0	12
0524CHS	Two-foot sand	096942711821	24.0	4.8	1.0	12

5" Channel Bottom Outlet

Uses: Two-foot channel basin section has bottom drain outlet molded into it.



Product #	Description	UPC Code	Dimensions (inches)			Package Quantity
			L	D	H	
0515CH	Channel Bottom Outlet	096942708319	24.0	4.5	3.6	12

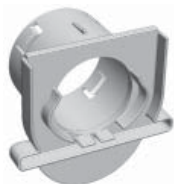
5" Channel Bottom Outlet Kit

A complete package: Kit includes a 4'-foot channel with molded outlet drain, two sections of 2' channel grate, one channel coupler and one solid end cap.



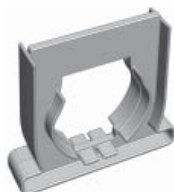
Product #	Description	UPC Code	Dimensions (inches)			Package Quantity
			L	D	H	
0515CHYK	Gray Channel Bottom Outlet Kit	096942712019	49.0	5.7	4.8	4
0515CHBK	Black Channel Bottom Outlet Kit	096942740326	49.0	5.7	4.8	4

5" Channel CPE Offset End Coupler Uses: Join sections of 5" channel basin.



Product #	Description	UPC Code	Dimensions (inches)			Package Quantity
			L	D	H	
0511CH	Channel PVC Offset End Outlet	096942708289	4.0	6.0	3.4	10

5" Channel Coupler Uses: Join sections of 5" channel basin.



Product #	Description	UPC Code	Dimensions (inches)			Package Quantity
			L	D	H	
0512CH	Channel Coupler	096942708289	4.0	6.0	1.3	20

5" Channel Solid End Cap Uses: Cap off 5" channel basin.



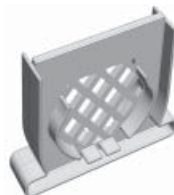
Product #	Description	UPC Code	Dimensions (inches)			Package Quantity
			L	D	H	
0513CH	Channel Solid End Cap	096942708296	4.0	6.0	1.3	20

5" Channel PVC End Outlet Uses: Attach 3", 4" singlewall or S&D drainage line to 5" channel basin.



Product #	Description	UPC Code	Dimensions (inches)			Package Quantity
			L	D	H	
0514CH	Channel PVC End Outlet	096942708302	4.0	6.0	3.4	10

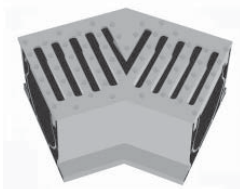
5" Channel Strain Coupler Uses: Join two sections of channel basin to help filter leaves and debris before they reach the drain outlet.



Product #	Description	UPC Code	Dimensions (inches)			Package Quantity
			L	D	H	
0516CH	Channel Strain Coupler	096942708326	4.0	6.0	1.3	20

5" Channel Basin 45° Elbow Grate

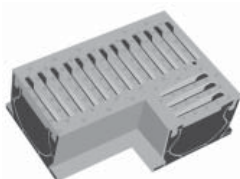
Use: Use to join two sections of channel basin at a 45° angle.



Product #	Description	UPC Code	Dimensions (inches)			Package Quantity
			L	W	H	
0545CHY	Gray basin with 45 elbow	096942710893	8.6	5.7	4.0	1
0545CHS	Sand basin with 45 elbow	096942711838	8.6	5.7	4.0	1
0545CHB	Black basin with 45 elbow	096942740364	8.6	5.7	4.0	1
0545CHG	Green basin with 45 elbow	096942740357	8.6	5.7	4.0	1

5" Channel Basin 90° Elbow Grate

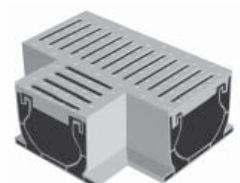
Use: Use to join two sections of channel basin at a 90° angle.



Product #	Description	UPC Code	Dimensions (inches)			Package Quantity
			L	W	H	
0590CHY	Gray basin with 90 elbow	096942710251	10.5	7.5	4.0	1
0590CHS	Sand basin with 90 elbow	096942740562	10.5	7.5	4.0	1
0590CHB	Black basin with 90 elbow	096942740371	10.5	7.5	4.0	1
0590CHG	Green basin with 90 elbow	096942740388	10.5	7.5	4.0	1

5" Channel Basin Tee Grate

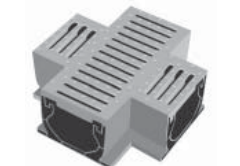
Use: Use to run a secondary channel basin off a main channel at a 90° angle.



Product #	Description	UPC Code	Dimensions (inches)			Package Quantity
			L	W	H	
0560CHY	Gray basin tee	096942710244	10.0	7.2	5.0	1
0560CHS	Sand basin tee	096942740555	10.0	7.7	4.0	1
0560CHB	Black basin tee	096942740531	10.0	7.7	4.0	1
0560CHG	Green basin tee	096942740548	10.0	7.7	4.0	1

5" Channel Basin Cross Tee

Uses: Combines two channel basins in cross configuration.



Product #	Description	UPC Code	Dimensions (inches)			Package Quantity
			L	W	H	
0530CHY	Gray basin cross tee	096942710237	10.0	10.0	4.0	1
0530CHB	Black basin cross tee	096942740333	10.0	10.0	4.0	1
0530CHG	Green basin cross tee	096942740340	10.0	10.0	4.0	1