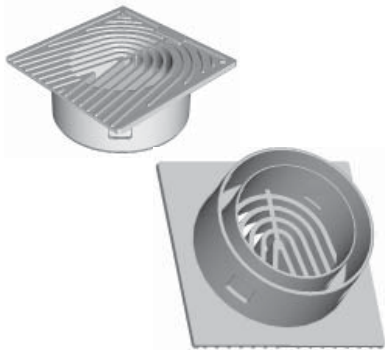


3" & 4" Emitter

Use with: 3", 4" corrugated singlewall elbow or tee fittings; 3", 4" S&D PVC elbow or tee fittings.



| Product # | Description | UPC Code | Dimensions (inches) | | | Package Quantity |
|-----------|--------------------|--------------|---------------------|-----|-----|------------------|
| | | | L | D | H | |
| 3400SD | 3" and 4" Emmitter | 096942708432 | 5.9 | 5.9 | 2.2 | 20 |

3"/4" Emitters with 90° Elbows



| Product # | Description | UPC Code | Dimensions (inches) | | | Package Quantity |
|-----------|------------------------------|--------------|---------------------|-----|-----|------------------|
| | | | L | D | H | |
| 3491SD | Emitter with 3" PVC 90 elbow | 096942708449 | 8.9 | 8.9 | 6.5 | 10 |
| 3492SD | Emitter with 4" PVC 90 elbow | 096942709699 | 8.9 | 8.9 | 6.5 | 10 |
| 3493SD | Emitter with 3" CPE 90 elbow | 096942708456 | 8.9 | 8.9 | 6.5 | 10 |
| 3494SD | Emitter with 4" CPE 90 elbow | 096942708463 | 8.9 | 8.9 | 6.5 | 10 |

Mitered Drain

Uses: Unique sloped grate with an attached length of 3", 4" PVC pipe which can be connected to drain pipes with similar couples. Angled grate reduces chance of floating debris clogging the pipe. Can be used as an inlet drain or an outlet drain.



| Product # | Description | UPC Code | Dimensions (inches) | | | Package Quantity |
|-----------|--------------------------|--------------|---------------------|-----|-----|------------------|
| | | | L | D | H | |
| 0399MDB | Black Drain with 3" pipe | 897899001047 | 15.0 | 4.0 | 3.5 | 1 |
| 0399MDY | Gray Drain with 3" pipe | 897899001030 | 15.0 | 4.0 | 3.5 | 1 |
| 0499MDB | Black Drain with 4" pipe | 897899001061 | 18.5 | 5.0 | 4.5 | 1 |
| 0499MDY | Gray Drain with 4" pipe | 897899001054 | 18.5 | 5.0 | 4.5 | 1 |