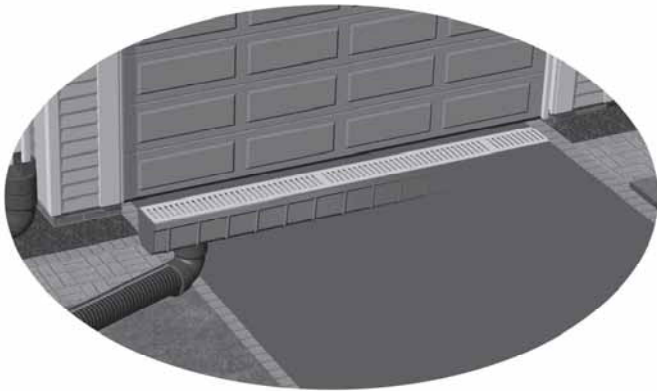


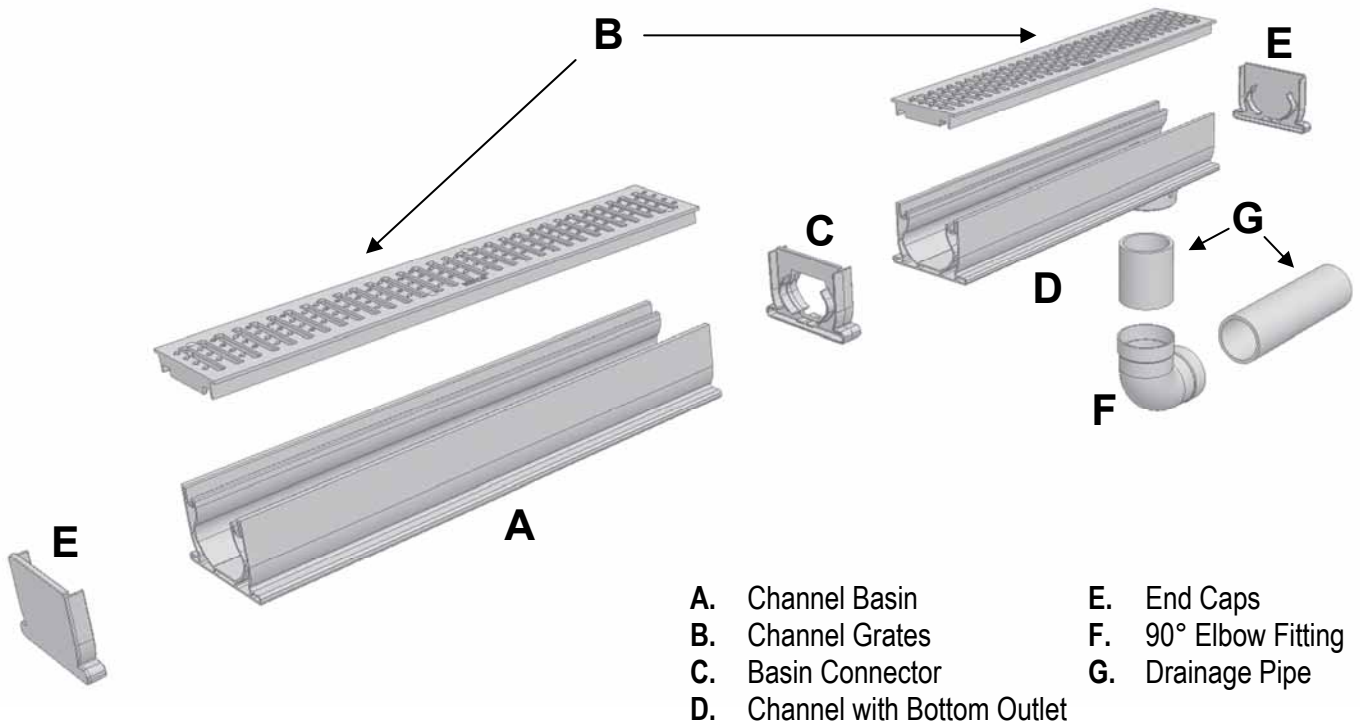
# Channel Basins, Grates and Ports

**Applications:** Channel basins and grates are used where hard surfaces create a greater volume of runoff than can be handled by round or square basins. Ideal for driveways, sidewalks, garages, swimming pools, patios, sports fields and greenhouses.



Use 5" channel and grate to collect runoff from driveways and sidewalks

Edge pool decks or patios with 3" or 5" channel drains to keep them drier and less slippery.

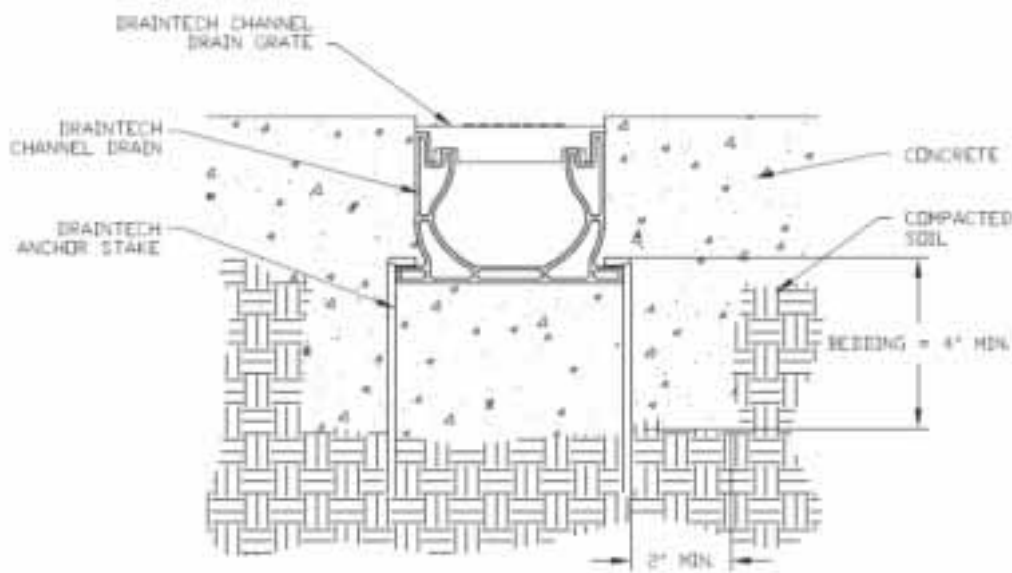


# Channel Basins, Grottes and Ports

## INSTRUCTIONS FOR CHANNEL INSTALLATION:

1. Create excavation area deep and wide enough for concrete bedding and channel. Erect a string line at the ends of the drain run at the desired level as a guide for the channel. First install the outlet end of the channel.
2. Install channel end-to-end PVC solvent weld cementing sections together. Choose functional locations for outlets along the channel run and glue to drain pipe. PVC solvent weld cement end caps where appropriate. Attach grates on the channels and tape grate holes to prevent debris from infiltrating the system during installation.
3. Use wood stakes or rebar to anchor channel to surrounding ground every couple feet on both channel sides and backfill with concrete, sand or soil (channel application dependant). Fill to appropriate grade and finish concrete.
4. For further installation guidelines, refer to Standard Details STD-1111 and STD-1112.

## DrainTech™ Channel Drain in Concrete

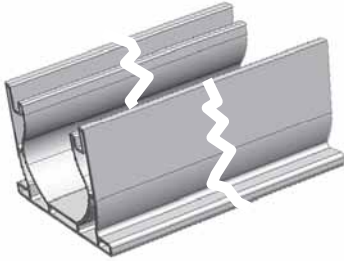


### Additional Guidelines:

1. In asphalt or hot mastic applications the channel must have a 4" concrete encasement to support structural integrity.
2. PVC primer and medium body fast set PVC solvent cement must be used to cement all components. For corrugated pipe, use tape to connect to components.
3. Under light traffic conditions the channel must be secure with surrounding trench tightly compacted with a 1" sand base and a minimum of 4" concrete on each side. If additional support is necessary or there is heaving in freeze-thaw areas, then a concrete bed beneath the channel may be required.
4. Parallel expansion joints must be installed to each side of channel drain run, but not directly adjacent to each side. Use crack control joints at right angles to channel when installing in concrete.
5. Channel does not need to be installed at a slope. The drain pipe's inclination connected to the channel will remove water accumulation.
6. For non-traffic installations, the grate should be recessed below grade a minimum of 1/8" and for traffic installations a minimum of 1/4".

# 3" Channel Basins, Grates and Ports

## 3" Channel Basin



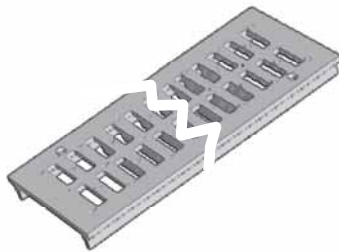
**Use with:** 3" or 4" Corrugated Singlewall Pipe; 3" or 4" TripleWall Pipe; 3" or 4" PVC Pipe; Singlewall HDPE Fittings; DrainTech 3" Channel Grates; and DrainTech 3" fittings. Anchor stakes (2002K) are available upon request. We recommend using 1 Channel Bottom Outlet for every 10 ft. of Channel Basin installed.

Product #	Description	Length	UPC Code	Dimensions (inches)			Package Quantity	List Price
				L	W	H		
0304CH	3" PVC Channel Basin	4 feet	96942709088	48.0	3.6	3.3	16	\$31.10
0306CH	3" PVC Channel Basin	6 feet	96942709095	72.0	3.6	3.3	8	\$46.50
0310CH	3" PVC Channel Basin	10 feet	96942709101	120.0	3.6	3.3	4	\$77.75

## 3" Channel Grate

### ADA Compliant

**Use with:** 3" DrainTech Channel Basin. Combine 2-foot lengths of grate to cover longer lengths of Channel Basin. Grey color is standard.



Product #	Description	Color	UPC Code	Dimensions (inches)			Package Quantity	List Price
				L	W	H		
0301CHDI	3" Channel Grate	Ductile Iron	96942717595	12.0	3.6	1.0	12	\$84.60
0301CHPBR	3" Channel Grate	Polished Brass	96942717311	12.0	3.6	1.0	12	\$99.70
0301CHSBR	3" Channel Grate	Satin Brass	96942717328	12.0	3.6	1.0	12	\$99.70
0324CHB	3" Channel Grate	Black	96942709750	24.0	3.6	1.0	8	\$11.30
0324CHG	3" Channel Grate	Green	96942709743	24.0	3.6	1.0	8	\$11.30
0324CHY	3" Channel Grate	Gray	96942709736	24.0	3.6	1.0	8	\$11.30
0324CHS	3" Channel Grate	Sand	96942711807	24.0	3.6	1.0	8	\$11.30

## 3" Channel Bottom Outlet



2-foot Channel Basin Section has bottom drain outlet molded in.

Product #	Description	UPC Code	Dimensions (inches)			Package Quantity	List Price
			L	W	H		
0315CH	3" Channel Bottom Outlet	96942709149	24.0	3.6	4.3	6	\$29.10

## 3" Channel Bottom Outlet Kit



The Kit includes a 4-foot channel, 1 channel coupler and 1 solid end cap. Both models come with top grates. Attach drainage pipe or fittings to the outlet.

Product #	Description	UPC Code	Dimensions (inches)			Package Quantity	List Price
			L	W	H		
0315CHYK	3" Channel Bottom Outlet Kit	96942711999	48.0	3.6	4.3	6	\$60.70

# 3" Channel Basins, Grates and Ports

## 3" Channel Basin 45° Elbow with Grate



**Application:** Use where you need to join two sections of channel basin at a 45° angle.

Product #	Description	Color	UPC Code	Dimensions (inches)			Package Quantity	List Price
				L	W	H		
0345CHY	3" Channel Basin 45° Elbow	Gray	96942710879	7.5	3.5	3.4	1	\$25.20
0345CHS	3" Channel Basin 45° Elbow	Sand	96942711814	7.5	3.5	3.4	1	\$25.20
0345CHB	3" Channel Basin 45° Elbow	Black	96942740425	7.5	3.5	3.4	1	\$25.20
0345CHG	3" Channel Basin 45° Elbow	Green	96942740418	7.5	3.5	3.4	1	\$25.20

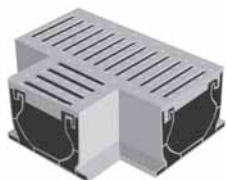
## 3" Channel Basin 90° Elbow with Grate



**Application:** Use where you need to join two sections of channel basin at a 90° angle.

Product #	Description	Color	UPC Code	Dimensions (inches)			Package Quantity	List Price
				L	W	H		
0390CHY	3" Channel Basin 90° Elbow	Gray	96942710220	9.0	9.0	3.3	1	\$25.90
0390CHS	3" Channel Basin 90° Elbow	Sand	96942710886	9.0	9.0	3.3	1	\$25.90
0390CHB	3" Channel Basin 90° Elbow	Black	96942740494	9.0	9.0	3.3	1	\$25.90
0390CHG	3" Channel Basin 90° Elbow	Green	96942740500	9.0	9.0	3.3	1	\$25.90

## 3" Channel Basin Tee with Grate

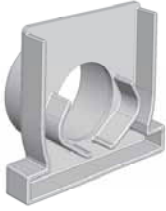


**Application:** Use to run a secondary channel basin off a main channel at a 90° angle.

Product #	Description	Color	UPC Code	Dimensions (inches)			Package Quantity	List Price
				L	W	H		
0360CHY	3" Channel Basin Tee	Gray	96942710213	9.0	6.3	3.3	1	\$24.50
0360CHS	3" Channel Basin Tee	Sand	96942740487	9.0	6.3	3.3	1	\$24.50
0360CHB	3" Channel Basin Tee	Black	96942740432	9.0	6.3	3.3	1	\$24.50
0360CHG	3" Channel Basin Tee	Green	96942740449	9.0	6.3	3.3	1	\$24.50

# 3" Channel Basins, Grates and Parts

## 3" Channel End Outlet



**Application:** Use to attach drainage line to 3" channel basin.

Product #	Description	UPC Code	Dimensions (inches)			Package Quantity	List Price
			D	W	H		
0314CH	3" Channel End Outlet	96942709132	3.3	3.6	3.3	20	\$7.90

## 3" Channel Solid End Cap



**Application:** Use to cap off 3" channel basin.

Product #	Description	UPC Code	Dimensions (inches)			Package Quantity	List Price
			D	W	H		
0313CH	3" Channel Solid End Cap	96942709125	1.3	3.6	3.3	20	\$6.70

## 3" Channel Coupler

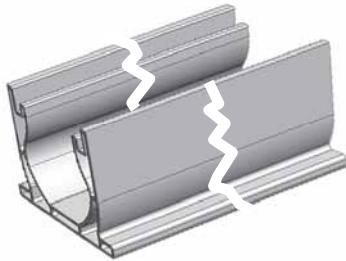


**Application:** Use to join sections of 3" channel basin.

Product #	Description	UPC Code	Dimensions (inches)			Package Quantity	List Price
			D	W	H		
0312CH	3" Channel Coupler	96942709118	1.3	3.6	3.3	20	\$7.00

# 5" Channel Basins, Grates and Ports

## 5" Channel Basin



**Use with:** 3" or 4" Corrugated Singlewall Pipe; 3" or 4" TripleWall Pipe; 3" or 4" PVC Pipe; Singlewall HDPE Fittings; DrainTech 5" Channel Grates; and DrainTech 5" fittings. Anchor stakes (2002K) are available upon request. We recommend using 1 Channel Bottom Outlet for every 10 ft. of Channel Basin installed.

**4 ft. length is standard. 6 ft. and 10 ft. lengths can be special ordered.**

Product #	Description	Length	UPC Code	Dimensions (inches)			Package Quantity	List Price
				L	W	H		
0504CH	5" PVC Channel Basin	4 feet	96942708241	48.0	5.7	3.7	6	\$55.30
0506CH	5" PVC Channel Basin	6 feet	96942708258	72.0	5.7	3.7	6	\$82.90
0510CH	5" PVC Channel Basin	10 feet	96942708265	120.0	5.7	3.7	6	\$138.20

## 5" Channel Grate

### ADA Compliant

**Use with:** 5" DrainTech Channel Basin. Combine 2-foot lengths of grate to cover longer lengths of Channel Basin.



Product #	Description	Color	UPC Code	Dimensions (inches)			Package Quantity	List Price
				L	W	H		
0501CHDI	5" Channel Grate	Ductile Iron	96942717601	12.0	4.8	1.0	10	\$89.00
0501CHPBR	5" Channel Grate	Polished Brass	96942717335	12.0	4.8	1.0	10	\$98.80
0501CHSBR	5" Channel Grate	Satin Brass	96942717342	12.0	4.8	1.0	10	\$98.80
0524CHB	5" Channel Grate	Black	96942709729	24.0	4.8	1.0	8	\$28.60
0524CHG	5" Channel Grate	Green	96942709712	24.0	4.8	1.0	8	\$28.60
0524CHY	5" Channel Grate	Gray	96942709705	24.0	4.8	1.0	8	\$28.60
0524CHS	5" Channel Grate	Sand	96942711821	24.0	4.8	1.0	12	\$28.60

## 5" Channel Bottom Outlet

2-foot Channel Basin Section has bottom drain outlet molded in.



Product #	Description	UPC Code	Dimensions (inches)			Package Quantity	List Price
			L	W	H		
0515CH	5" Channel with CPE/PVC Bottom Outlet	96942708319	24.0	5.7	4.8	12	\$38.90

# 5" Channel Basins, Grates and Parts

## 5" Channel Bottom Outlet Kit

A complete package, consisting of a 4-foot length of 5" Channel Basin with molded outlet drain, 2 sections of 2-foot channel grate in gray, and 1 channel coupler and 1 solid end cap.



Product #	Description	Color	UPC Code	Dimensions (inches)			Package Quantity	List Price
				L	W	H		
0515CHYK	5" Channel Bottom Outlet Kit	Gray	96942712019	49.0	5.7	4.8	4	\$119.50
0515CHBK	5" Channel Bottom Outlet Kit	Black	96942740326	49.0	5.7	4.8	4	\$119.50

## Garage Channel Kit

A complete driveway drainage system packaged into a colorful carrying box. Kit includes 16 feet of 5" wide channel drain (4, 4-foot sections), 16 feet of gray grate (4, 4-foot sections); 3 couplers, 2 end caps, and grate screws.



Product #	Description	UPC Code	Dimensions (inches)			Package Quantity	List Price
			L	W	H		
0516CHYGK	5" x 16' Garage Channel Kit	96942717694	48.0	12.0	12.0	1	\$431.40

# 5" Channel Basins, Grates and Ports

## 5" Channel Basin 45° Elbow with Grate



**Application:** Use where you need to join two sections of channel basin at a 45° angle.

Product #	Description	Color	UPC Code	Dimensions (inches)			Package Quantity	List Price
				L	W	H		
0545CHY	5" Channel Basin 45° Elbow	Gray	96942710893	8.6	5.7	4.0	1	\$51.20
0545CHS	5" Channel Basin 45° Elbow	Sand	96942711838	8.6	5.7	4.0	1	\$51.20
0545CHB	5" Channel Basin 45° Elbow	Black	96942740364	8.6	5.7	4.0	1	\$51.20
0545CHG	5" Channel Basin 45° Elbow	Green	96942740357	8.6	5.7	4.0	1	\$51.20

## 5" Channel Basin 90° Elbow with Grate



**Application:** Use where you need to join two sections of channel basin at a 90° angle.

Product #	Description	Color	UPC Code	Dimensions (inches)			Package Quantity	List Price
				L	W	H		
0590CHY	5" Channel Basin 90° Elbow	Gray	96942710251	10.5	7.5	4.0	1	\$43.10
0590CHS	5" Channel Basin 90° Elbow	Sand	96942740562	10.5	7.5	4.0	1	\$43.10
0590CHB	5" Channel Basin 90° Elbow	Black	96942740371	10.5	7.5	4.0	1	\$43.10
0590CHG	5" Channel Basin 90° Elbow	Green	96942740388	10.5	7.5	4.0	1	\$43.10

## 5" Channel Basin Tee with Grate



**Application:** Use to run a secondary channel basin off a main channel at a 90° angle.

Product #	Description	Color	UPC Code	Dimensions (inches)			Package Quantity	List Price
				L	W	H		
0560CHY	5" Channel Basin Tee	Gray	96942710244	10.0	7.7	4.0	1	\$53.90
0560CHS	5" Channel Basin Tee	Sand	96942740555	10.0	7.7	4.0	1	\$53.90
0560CHB	5" Channel Basin Tee	Black	96942740531	10.0	7.7	4.0	1	\$53.90
0560CHG	5" Channel Basin Tee	Green	96942740548	10.0	7.7	4.0	1	\$53.90

## 5" Channel Basin Cross Tee with Grate



**Application:** Use to combine two channel basins in a cross configuration.

Product #	Description	Color	UPC Code	Dimensions (inches)			Package Quantity	List Price
				L	W	H		
0530CHY	5" CB Cross Tee	Gray	96942710237	10.0	10.0	4.0	1	\$72.80
0530CHB	5" CB Cross Tee	Black	96942740333	10.0	10.0	4.0	1	\$72.80
0530CHG	5" CB Cross Tee	Green	96942740340	10.0	10.0	4.0	1	\$72.80

# 5" Channel Basins, Grates and Ports

## 5" Channel CPE Offset End Outlet



**Application:** Use to attach 3" and 4" Singlewall or S&D drainage line to 5" channel basin where an offset connection is needed.

Product #	Description	UPC Code	Dimensions (inches)			Package Quantity	List Price
			L	W	H		
0511CH	5" Channel PVC Offset End Outlet	96942711401	4.0	6.0	3.4	10	\$8.10

## 5" Channel Coupler



**Application:** Use to join sections of 5" channel basin.

Product #	Description	UPC Code	Dimensions (inches)			Package Quantity	List Price
			L	W	H		
0512CH	5" Channel Coupler	96942708289	4.0	6.0	1.3	20	\$7.00

## 5" Channel Solid End Cap



**Application:** Use to cap off 5" channel basin.

Product #	Description	UPC Code	Dimensions (inches)			Package Quantity	List Price
			L	W	H		
0513CH	5" Channel Solid End Cap	96942708296	4.0	6.0	1.3	20	\$7.00

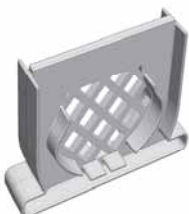
## 5" Channel PVC End Outlet



**Application:** Use to attach 3" and 4" Singlewall or S&D drainage line to 5" channel basin.

Product #	Description	UPC Code	Dimensions (inches)			Package Quantity	List Price
			L	W	H		
0514CH	5" Channel PVC End Outlet	96942708302	4.0	6.0	3.4	10	\$8.10

## 5" Channel Strainer Coupler



**Application:** Use when joining 2 sections of channel basin to help filter leaves and debris before they reach the drain outlet

Product #	Description	UPC Code	Dimensions (inches)			Package Quantity	List Price
			L	W	H		
0516CH	5" Channel Strainer Coupler	96942708326	4.0	6.0	1.3	20	\$8.29